

Motic® Microscopes

B1-SERIES BIOLOGICAL MICROSCOPE

The Motic B1-Series Biological Microscopes with its standard features are designed for school applications. This system is for use in laboratories, clinics, research facilities and medical schools. The modern and ergonomic design distinguish itself from the others. Its affordable price and excellent quality give you the best value for your money.



Distributed by:

the **microscope**  **depot**

Sales: 888-777-8835 • Email: sales@m-depot.com

Main: 209-839-2990 • Fax: 209-839-2999

<http://www.microscope-depot.com>

B1-220A

Motic® certified ISO 9001

With the compact **ERGONOMICAL** design, B1 series micro **Versatility and Durability** which is sophisticated and Use

Head

There are five kinds of head for your choice, which are 360° rotating around its vertical axis. Two binocular heads are available, with standard 45° inclined and optional 30° inclined, providing adequate choices for your best viewing comfort. Also, diopter rings on both tubes are a standard feature to facilitate compensation for eye acuity. Graduated interpupillary distance adjustment is from 54mm to 76mm. Also, there are monocular, dual teaching and trinocular head available for selection.

Mechanical Stage

Built-in ball bearings mechanical stage provides a travel range of 76mm X 50mm in the X and Y direction respectively with graduations reading up to 0.1mm for accurate positioning of specimen.

Coaxial Coarse and Fine Focusing Knobs

The precision focusing mechanism is designed for frequent use and also provides a smooth adjustment of focus. The coarse focus is with adjustable tension device.

Condenser

The extremely efficient, removable N.A. 1.25 abbe condenser for brighter illumination level, and an iris diaphragm for resolution and contrast control.

Illuminator

A standard halogen lamp 12V/20W with the intensity control system is used, providing an even and bright illumination for all magnifications. Köhler illumination can be ordered as option which is centerable for advanced and special applications.



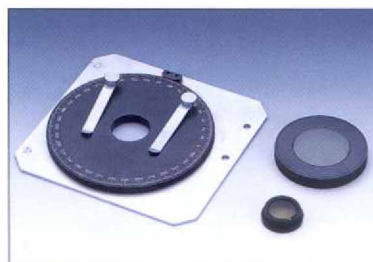
B1-211A

Accessories for microscopy applications



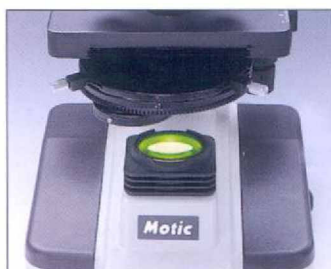
Phase Contrast

Phase contrast provides clear contrast of specimen without dying and therefore useful for observing alive or transparent specimens.



Polarizing

Polarizing - special polarizing equipment available with polarizer, analyzer and an optional pol specimen stage enable pol microscopy as Geology, Mineralogy etc.



By simply rotating the turret, the condenser can be set for brightfield and phase contrast microscopy. It can be used with 10x, 20x, 40x and 100x phase objectives. Simple plug in phase ring is also available for 10X, 20X and 40X phase objectives.



Darkfield

Darkfield central stopenables darkfield observation at 4x through 40x when the attachment is mounted on the brightfield condenser bottom section.

Köhler Illumination

Köhler illumination which is centerable and can be ordered as option.

scope incorporates Quality,
r friendly.

Motic®
Microscopes



Objectives

A full range of achromatic (A-10X, A-40XR and A-100XR oil) and semi-plan (SP-4X, SP-10X, SP-40XR, and SP-100XR oil) and plan (PL-4X, PL-10X, PL-40XR, and PL-100XR oil) objectives in the B1 series provide you with superior optical quality. A new device for anti-fungus is available, this effect can last for more than three years.

Objectives	Magnification	N.A.
High performance achromatic	PL4X	0.1
	A10X	0.25
	A20X	0.45
	A40X	0.65
	A60X	0.85
	A100X	1.25
Ultra high performance semi-plan	SP4X	0.1
	SP10X	0.25
	SP40X	0.45
	SP100X	1.25
Plan with almost flat field of view	PL4X	0.1
	PL10X	0.25
	PL20X	0.45
	PL40X	0.65
	PL60X	0.85
	PL100X	1.25



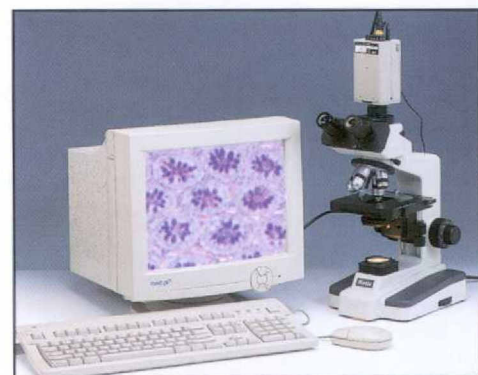
Eyepieces

Motic B1 series comes in with standard widefield WF10X (18mm) eyepieces, and options of Huygens H5X eyepieces, widefield WF15X eyepieces, widefield WF10X (20mm) eyepieces and widefield WF20X eyepieces.

Eyepieces	WF10X/18	WF10X/20	WF15X	WF20X
Field Number	18mm	20mm	12mm	11mm

Video & Photo Microscopy System

Video & photo adapters with the 3rd observation tube of the trinocular head enable the use of video and photo microscopy which is becoming a popular application. Third eyepiece tube is available as add on to the trinocular tube for use as the third eyepiece tube and also for use of goose neck CCD cameras.

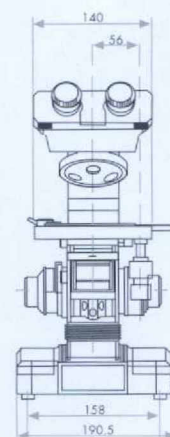


B1-223 SP with Video System

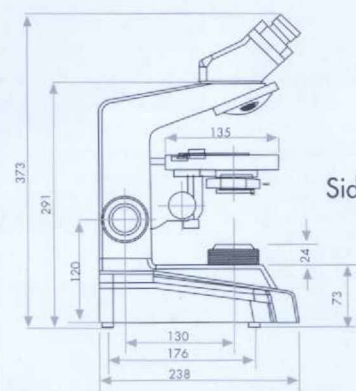


B1-223A with Camera

Dimensions



Front View



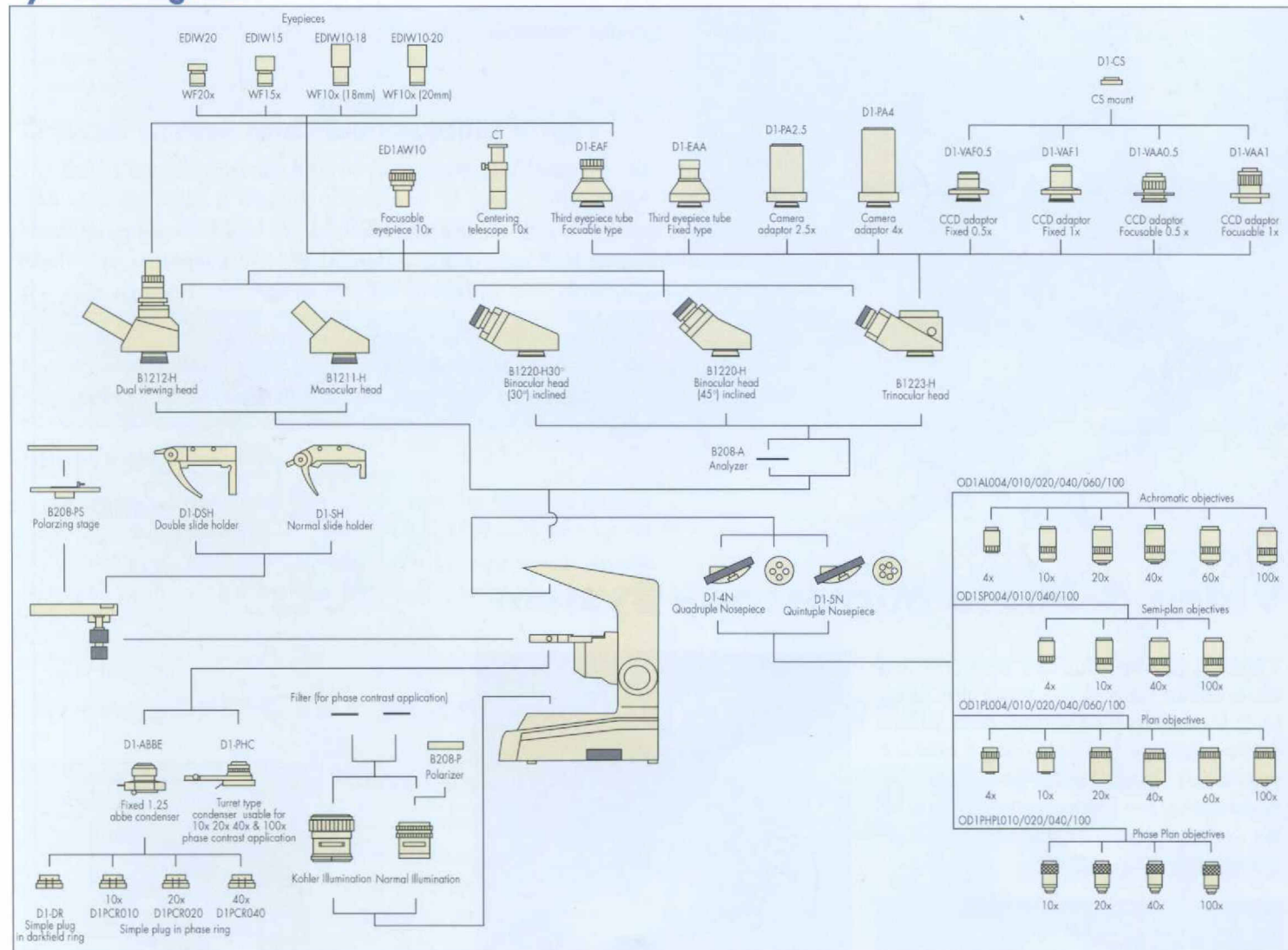
Side View

B1 Series System at a Glance

[illegible]

- Included

System Diagram



Five Years Warranty: All Motic instruments are warranted against defects in material and workmanship for five years. Damage resulted from repair by unauthorized parties or damage due to accident, alternation, misuse is not covered. Warranty service is provided by Speed Fair Co., Ltd. or its authorized dealer. Defective Motic instrument covered by the warranty will be repaired free of charge when they are returned, postpaid, to Speed Fair Co., Ltd. or its authorized dealer in your region. **Design Change:** The manufacturer reserves the right to make changes in instrument design in accordance with scientific and mechanical progress, without notice and without obligation. **Electrical:** All electrical parts are arranged according to CE, VDE, UL and CSA requirements.

Motiv[®]

A registered trade mark of Speed Fair Co., Ltd. (Hong Kong)



 <http://www.motic.com>

SOLE AGENT: